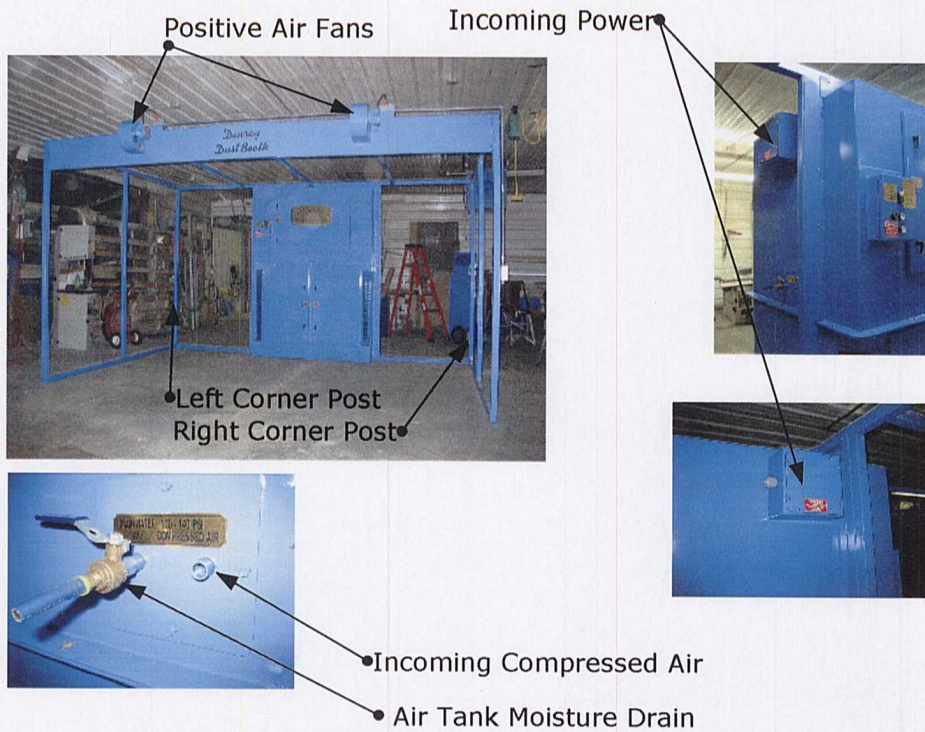


# Dynamo DB Series Dust Booths

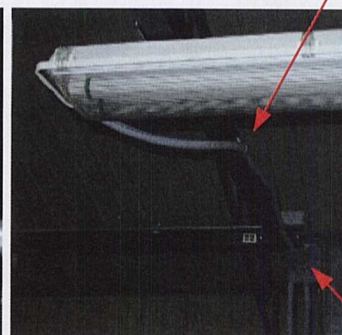
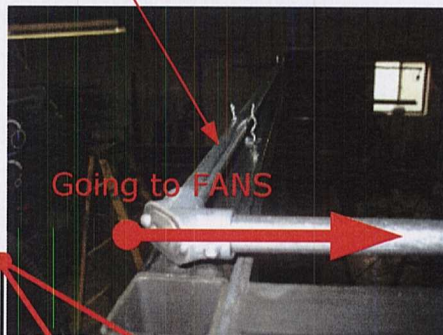
## Installation Tips



# Single Power Units General Information



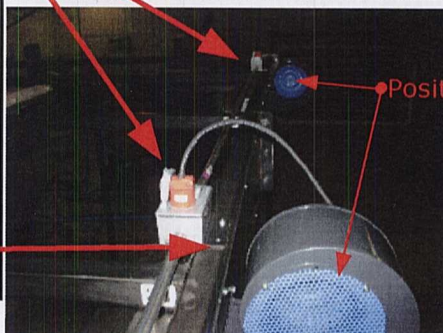
Conduit on the top of the left wall. Install after the vinyl has been installed.



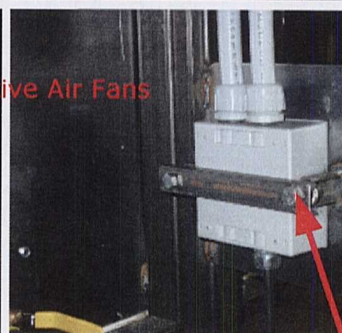
The view of the light inside the work area. Conduit screws into back of the box and hangs from the tube

Receptacles for the fans. these fans are plugged into the receptacles. These boxes are screwed to the tube after the vinyl is installed.

Look and see the mount along the side of the box.



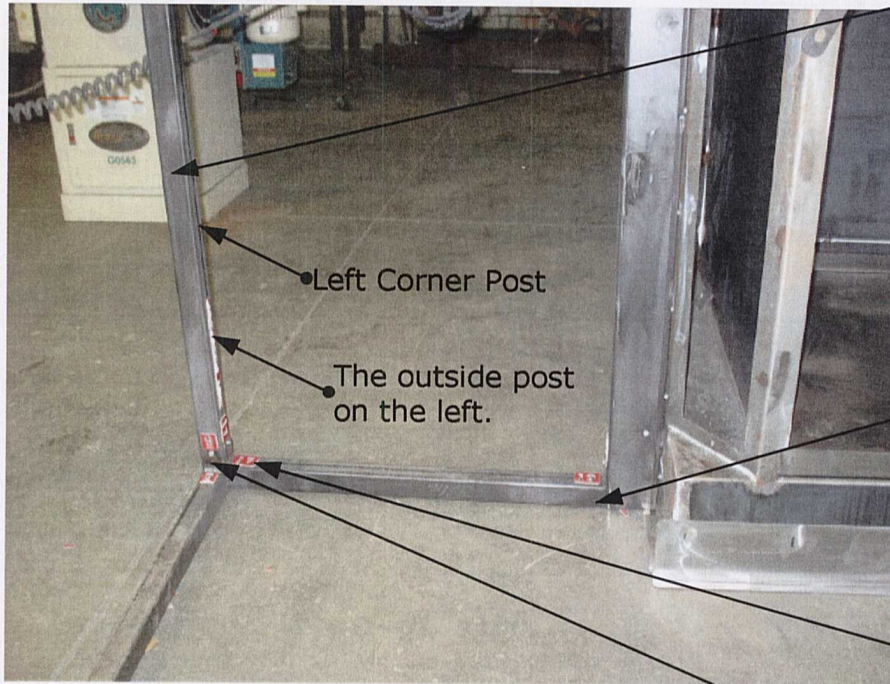
Positive Air Fans



The back of the switch box, this bar pushes the box to the switch plate.



The right and left corner post are the first post you need to locate



Left Corner Post

The outside post on the left.

Locate these post first the numbers on the bottom will tell you the short piece on the floor, the number on the right side will indicate which post on the left side of the left power unit

This number will be on the bottom of the left

Numbers to locate the parts in the proper place. All ODD numbers are on the floor Even numbers are on top.



The number on the bottom of the post on the right side of the right power unit. will match the number on the short tube

Right corner post the very outside post on the right

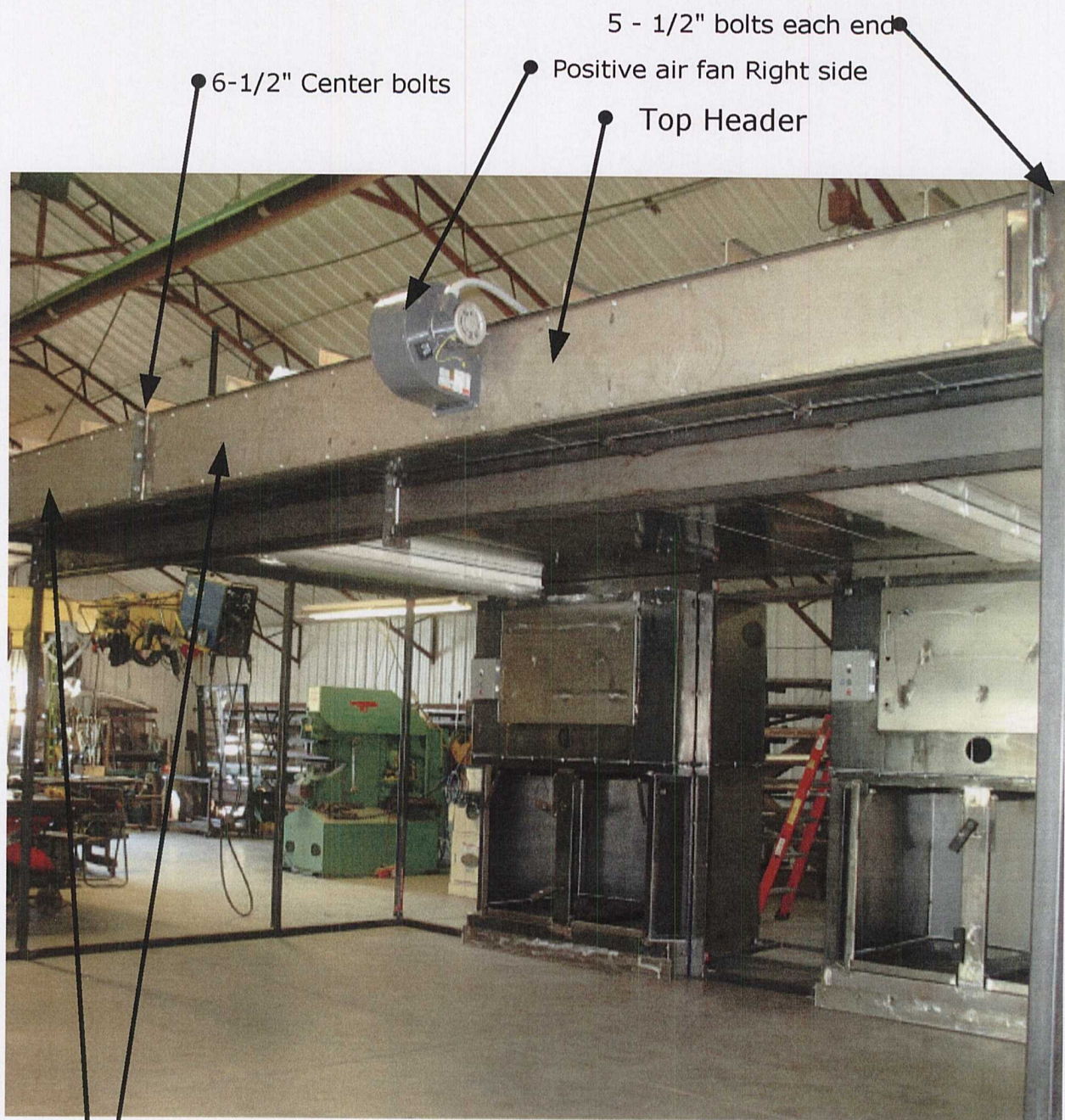
Odd number to tell which tube for the floor





If your floor does not lay good and flat, caulking will need to be placed between the floor tube and the flooring. This will prevent dust being blown under the tube when compressed air is being used to blow items off



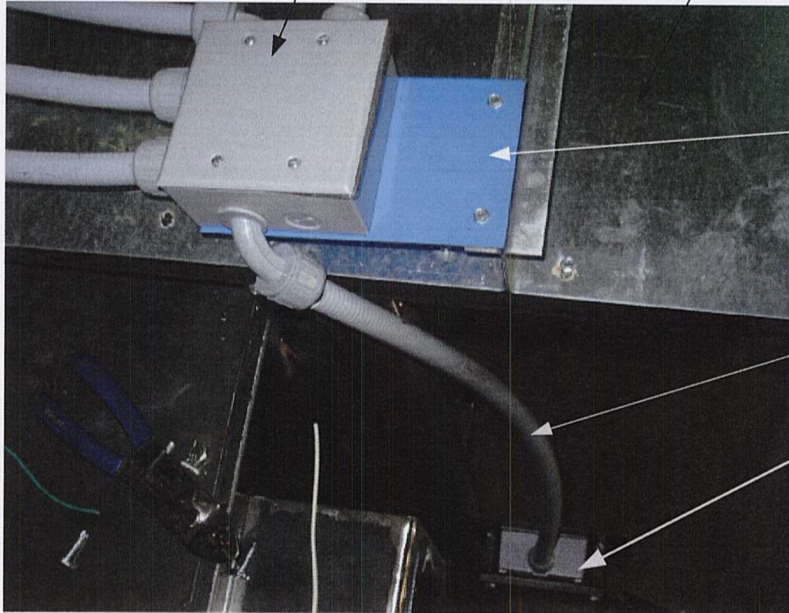


Bolt the left and right front header are to bolted together on the floor and lifted in place by a forklift. If your front is three piece you will have left and right POSI Air and the other is the center. Tighten the center bolts up before lifting in place. Locate all the bolts on the ends before tightening any of them.



Junction Box that separates  
all wiring for fans and  
lights.

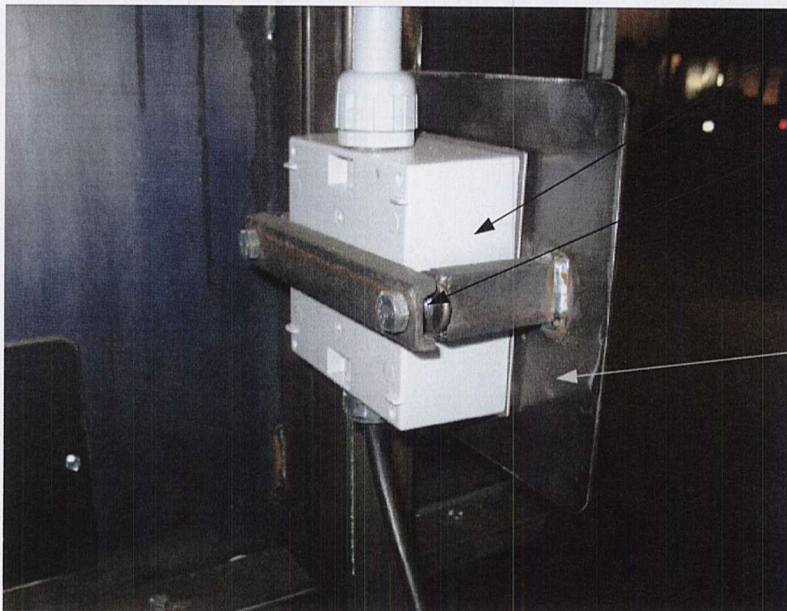
On Top of Ceiling looking down  
beside the left power unit on the  
outside



This box is secured to  
the panels by 2 screws.

Conduit to switch box.

Top of switch box



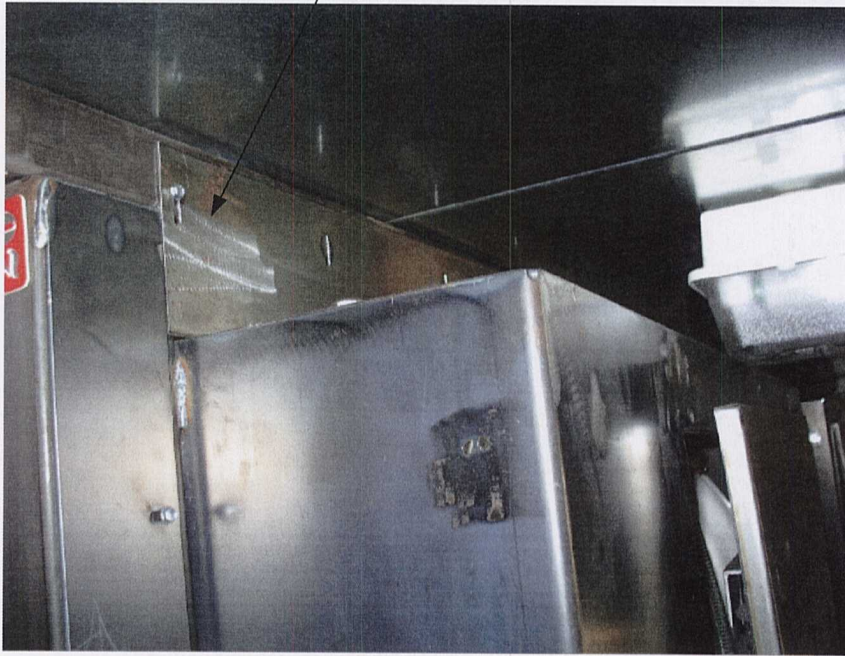
Fan Switch

This switch box is held  
in place by this bar squeezing  
the box to the plate.

Place velcro around this  
plate, so the vinyl will  
be secured to this plate.  
Put the vinyl on before  
the switch box is secured  
in place.  
You will have to cut out  
the vinyl around the post  
that bolts to cross bar.



this the top trim, it will be a flat steel part with slots cut in it for screws to hold in place.



Knob that holds doors shut.

Dust drawers

Base Trim, 3 piece  
two sides one on the front.

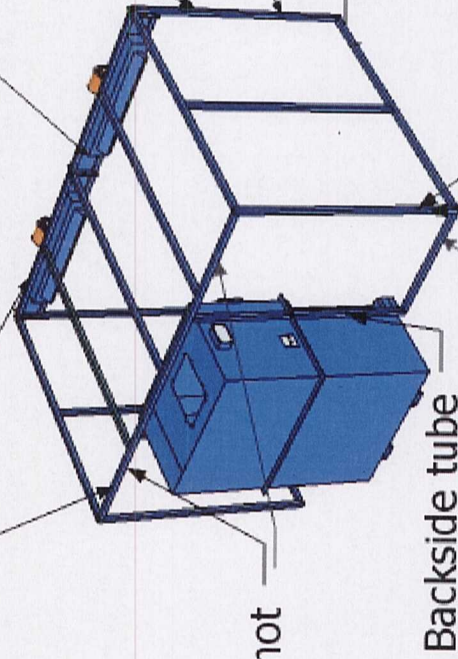




## VELCRO Ins.

Top side in front and back

Velcro the following tubes



Back side on the sides not over the power unit

outside of front tube, on sides only

The rough side of the velcro is to be installed to the tubes.

then the fuzzy part of the velcro will be placed to the rough side LEAVING the tape over the

adhesive, install vinyl and pull tight,

Start pulling off the tape and pushing

the vinyl to the bottom tube, starting

in the front corner and work yourself

towards the back. Go to other side and

pull all wrinkles out, BUT do not pull

real tight, and start same process on

the bottom tube on other side. Then

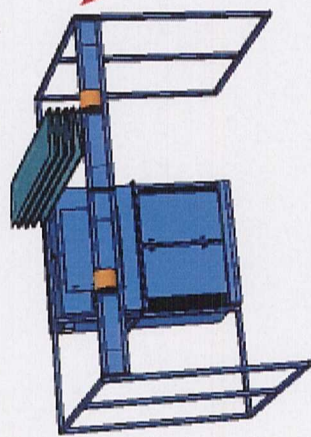
do the verticle tubes, trying to keep it

wrinkle free, starting at the top working

your way down.



We unfold the vinyl on top of the machine most places do not have a clean large area to unfold on their floor.

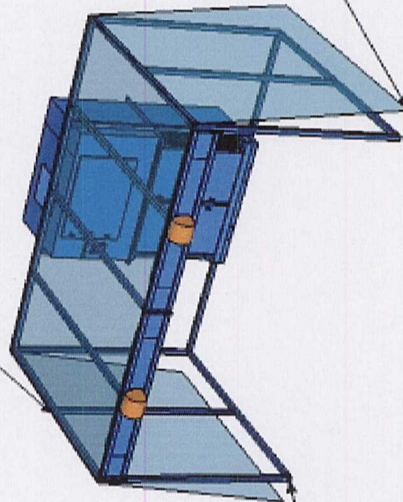


**Vinyl Ins**

4.. Going to the back and repeat step three

After the Velcro is installed and all Vinyl installation is finished, then take a #10 Hex-teck screw and washer all along the OUTSIDE every 12-14" apart, to hold the vinyl and velcro in place.

1 Pull the adhesive strips off the bottom on one side first



3.. Start in the front and pull the adhesive strip off the bottom and stick the vinyl to the velcro. Work your way up, across the top and down the other side.

2 Go to other side and pull tight and remove the adhesive in the front and start sticking the vinyl to the velcro and work your way to the back, trying to keep out wrinkles.